

# R1002010xx

Lv4-2020-r1

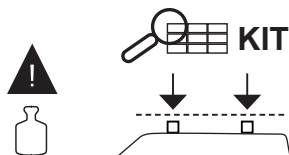
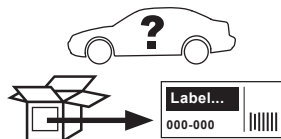
Modelo-model:

**FIRRAK onus T**

Lote-Lot-Lot-Lot:



Peso-Weight-Poids-Gewicht:



CEE - EEC type approval:  
**e9\*74/483\*2007/15\*3022**

ES **Instrucción de montaje**  
¡Leer primero!

EN **Assembly instructions**  
Read first!

FR **Instruction de montage**  
Lire en premier!

DE **Montageanleitung**  
Zuerst lesen!

Barras de acero

Steel bars

Barres d'aluminium

Stahldachträger

1



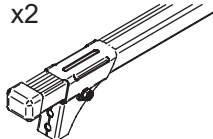
x1



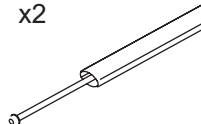
x1

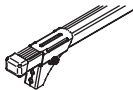
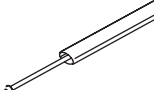




x2



x2



Código Code					Lote Lot
R100201001	(823-203)	(825-204)	105 cm	3,83 kg	01/20
R100201002	(823-213)	(825-214)	115 cm	4,18 kg	01/20



**Importante!**  
**Important!**  
**Important!**  
**Wichtig!**

ES Estas barras tienen que usarse con Kits de fijación FIRRAC!

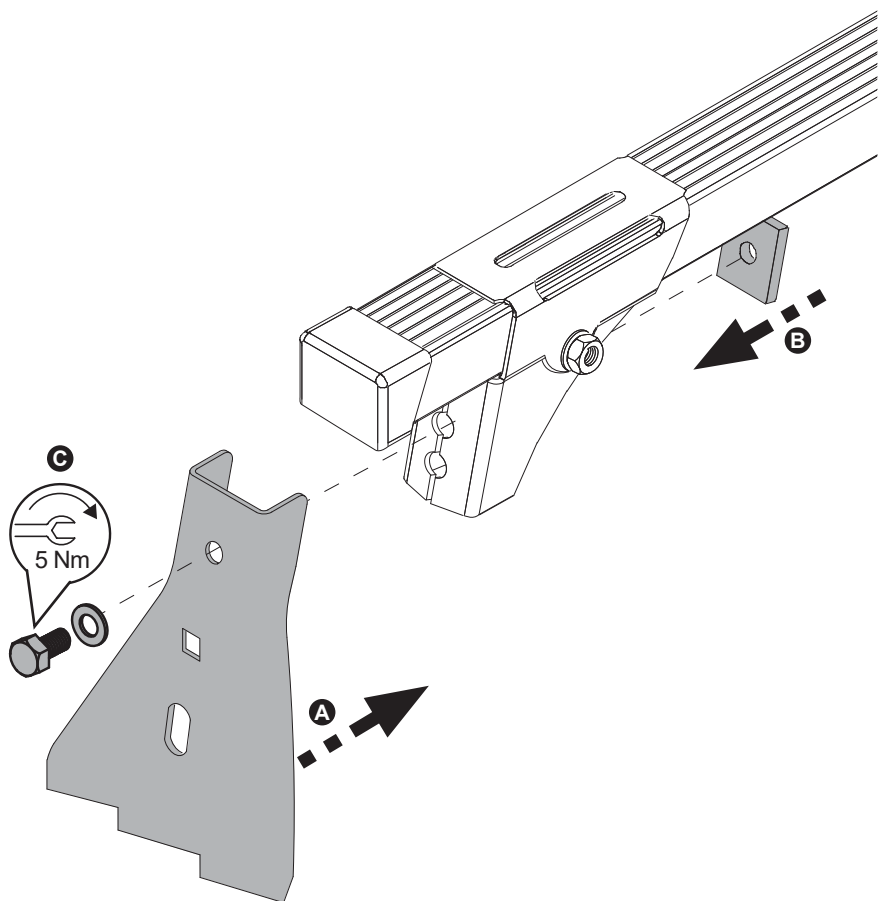
EN Bars must be used with FIRRAC fixation Kits!

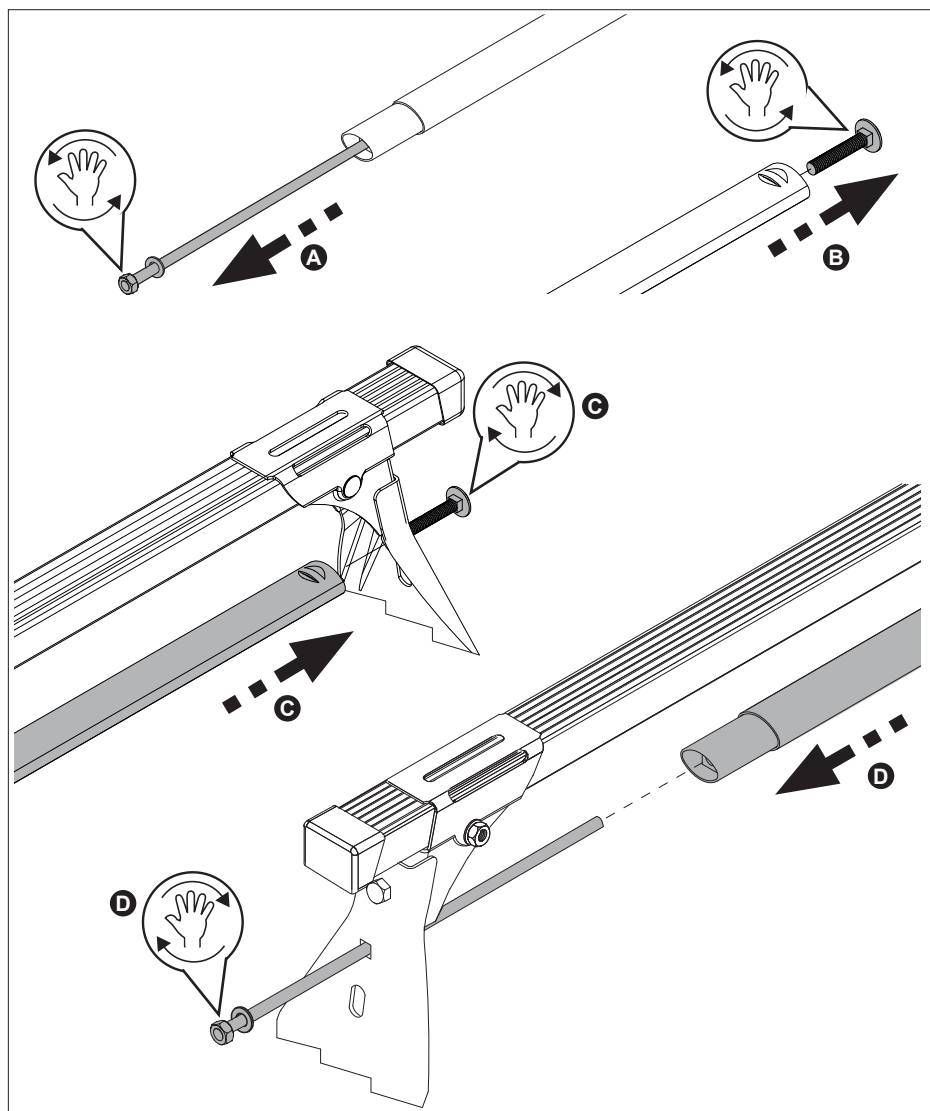
FR Les barres devront être utilisées avec les Kits de fixation FIRRAC!

DE Die Dachlasträger nur mit FIRRAC Stützfuß-Kits befestigen!



1

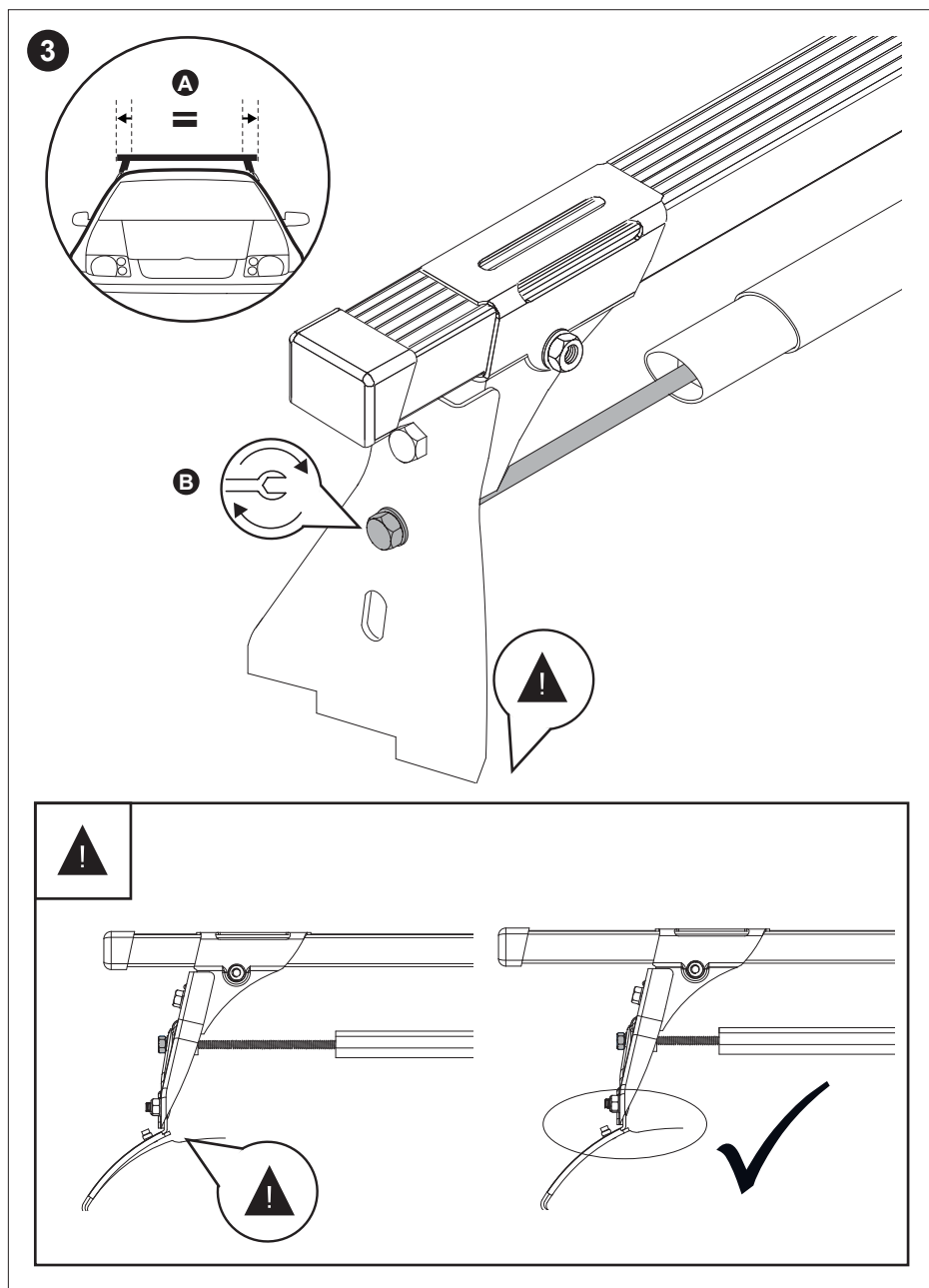




2

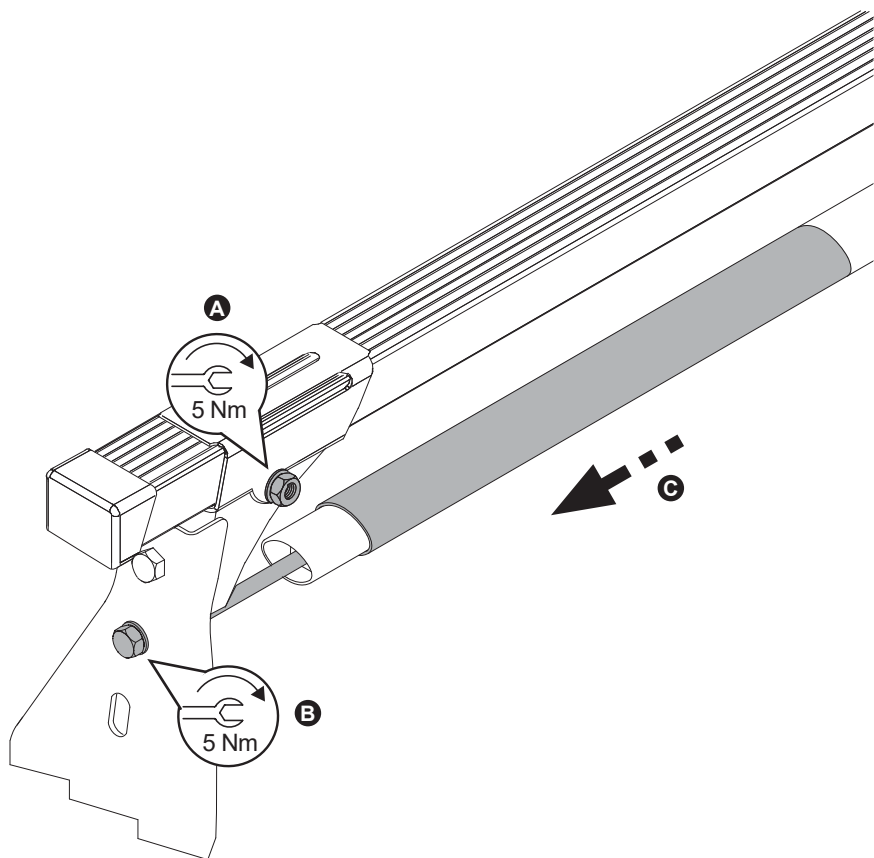


2



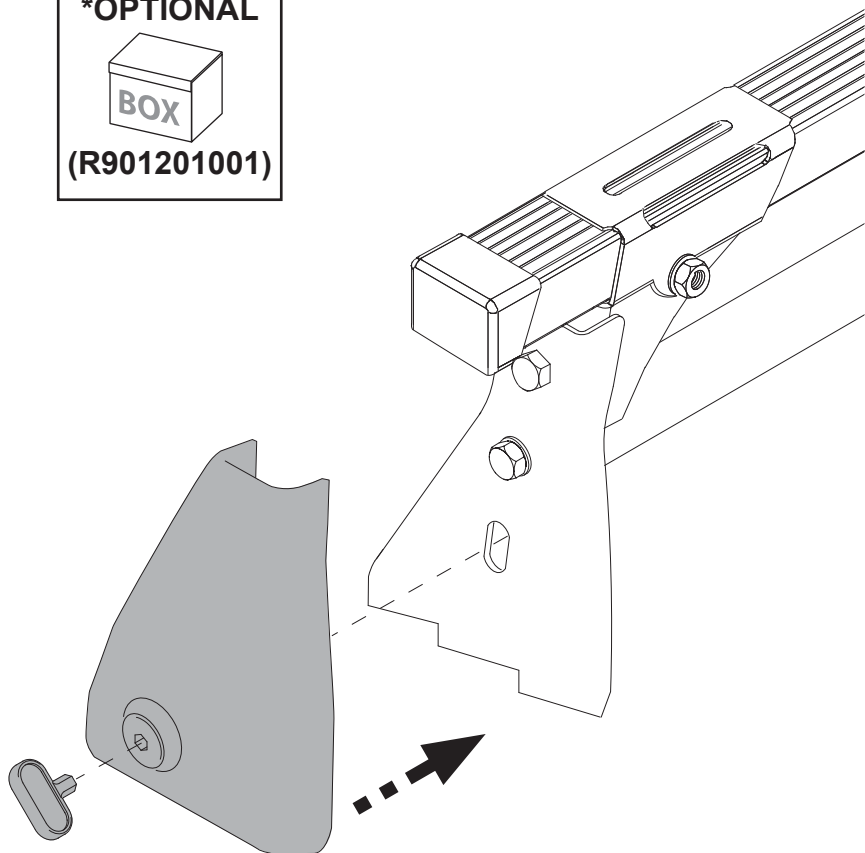


4





5

**\*OPTIONAL****(R901201001)**



CRUZBER SA  
ES-A14018311  
Pol.Ind. Las Salinas II  
14960 - Rute - Spain

[www.firrak.eu](http://www.firrak.eu)