



Art. 6201975 Optional Bici Exclusiv 2

(D) Montageanleitung

(I) Istruzioni di montaggio

(NL) Montage instructies

(GB) Mounting Instructions

(F) Notice de montage

(CZ) Montážní návod

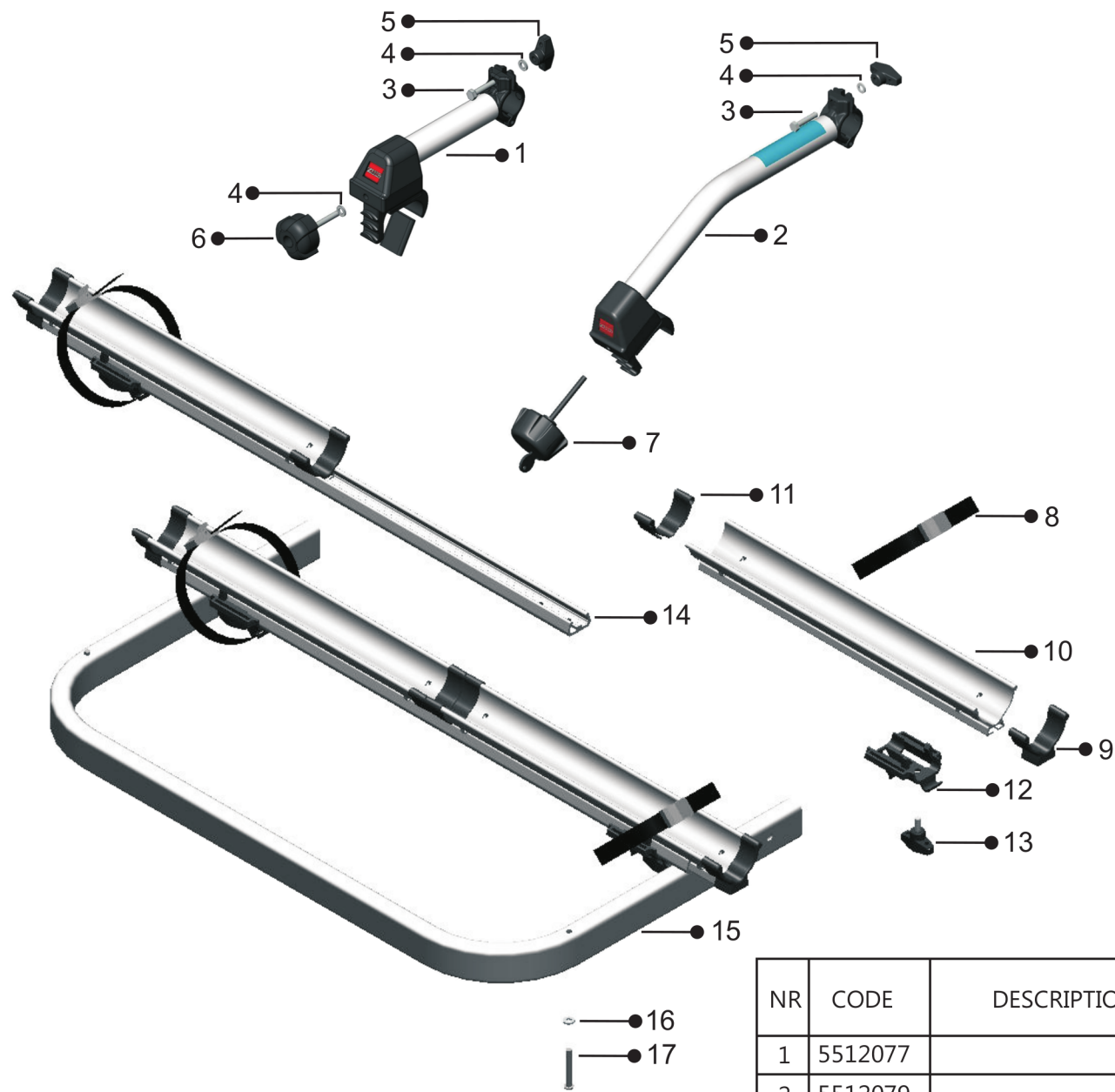


= **Kg 4.2**
Lb 9.3

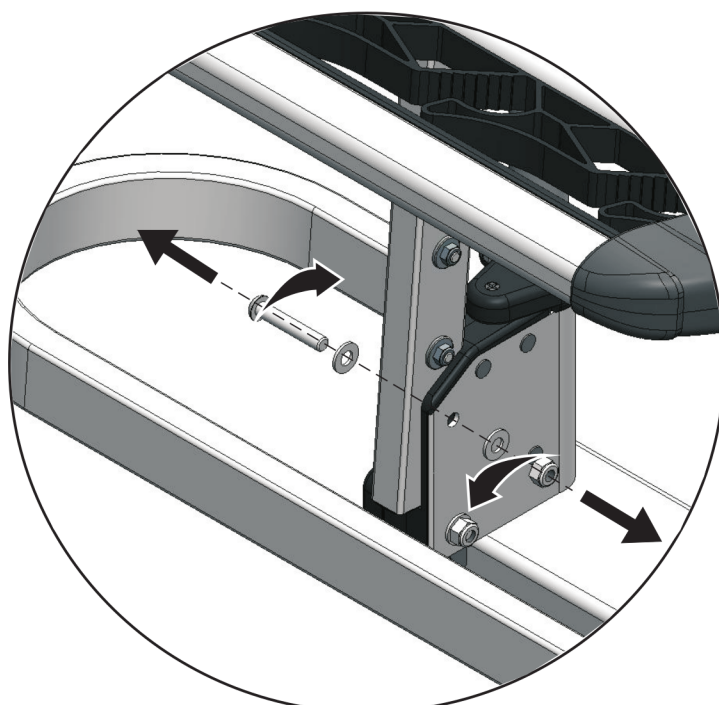
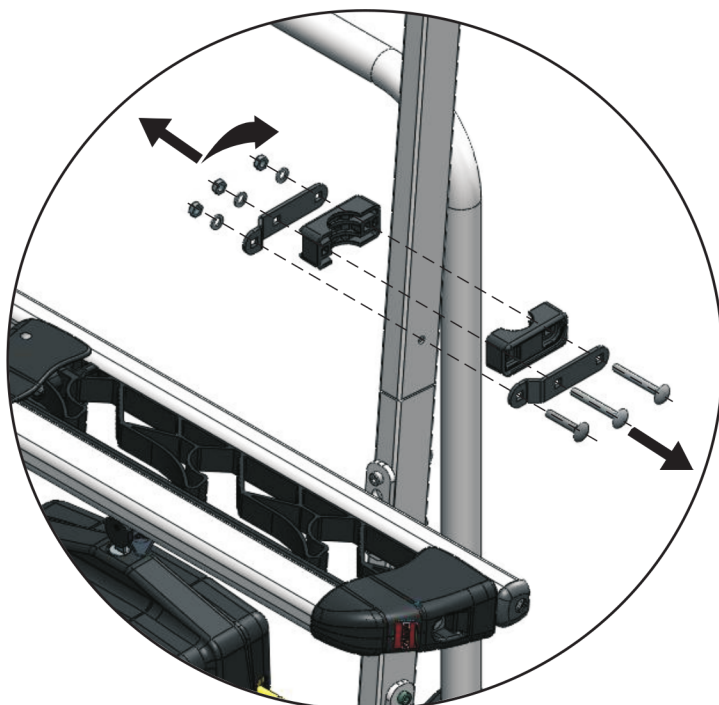
FABBRI PORTATUTTO srl

Sede Legale Via Belvedere Fogliense, 575 - I - 47836 MONDAINO (RN)

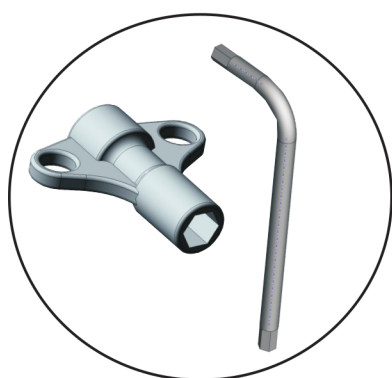
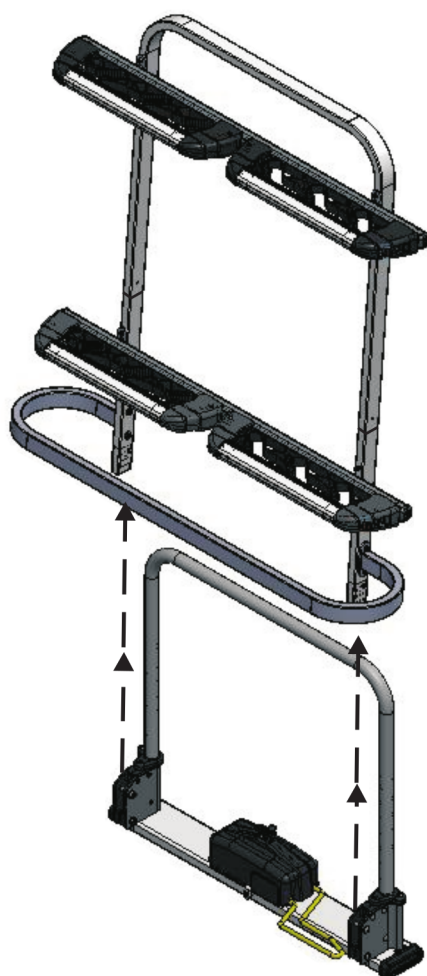
Tel. ++39(0)309638801 - ++39(0)309638802 - Fax ++39(0)309980343 - e-mail: Info@fabbri.info - website: www.fabbri.info



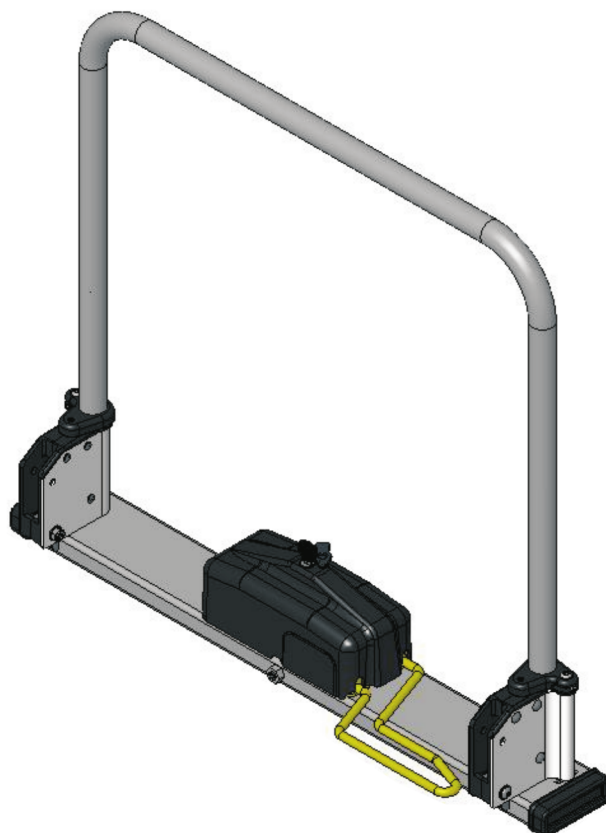
NR	CODE	DESCRIPTION	Q.TA'
1	5512077		1x
2	5512079		1x
3	3049549	M6x60 UNI 5931	2x
4	3043476	Ø6.4xØ12x1.6 UNI 6592	3x
5	4086866		2x
6	4086873		1x
7	3040491		1x
8	4078796		4x
9	4088866		4x
10	3032374		4x
11	4088868		4x
12	4078784		4x
13	4068865		4x
14	3036708		2x
15	3036723		1x
16	3043485	Ø6.1xØ12x1.6 UNI 1751-A	4x
17	3049622	M6x50 UNI 7380	4x



2



3



(D) Montage

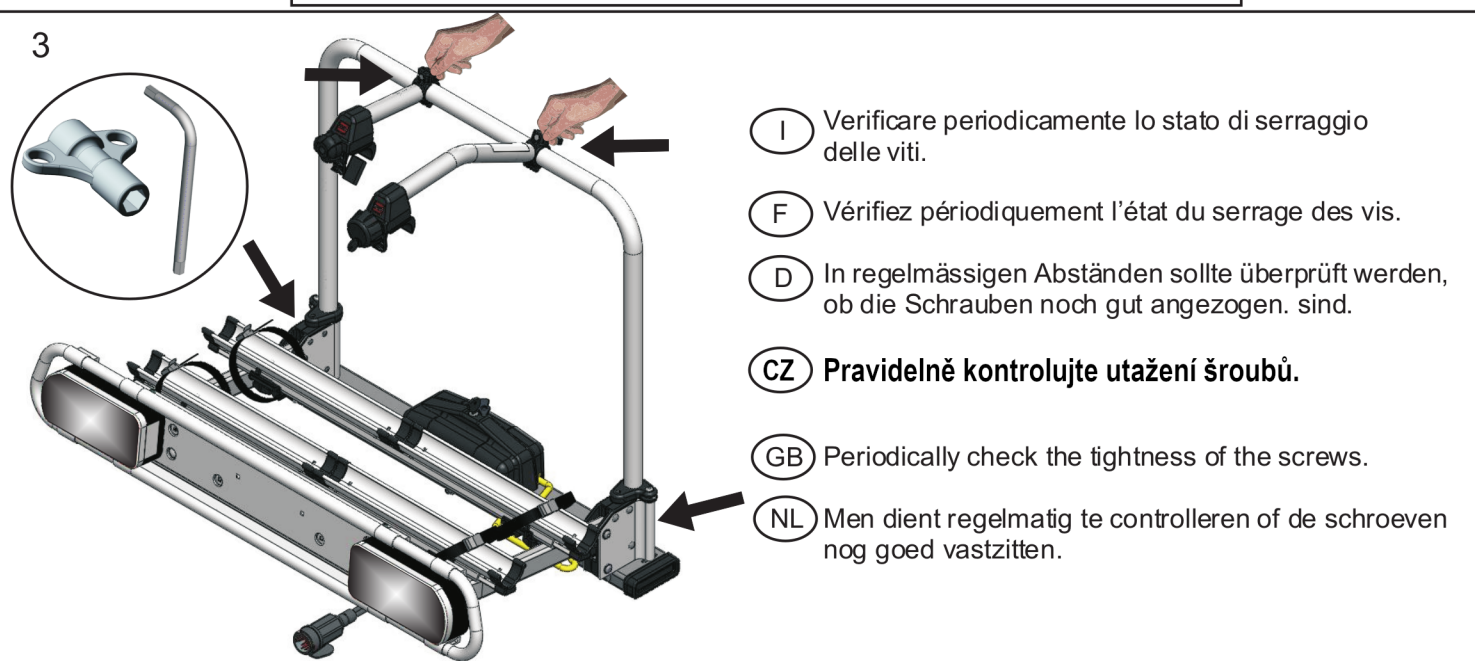
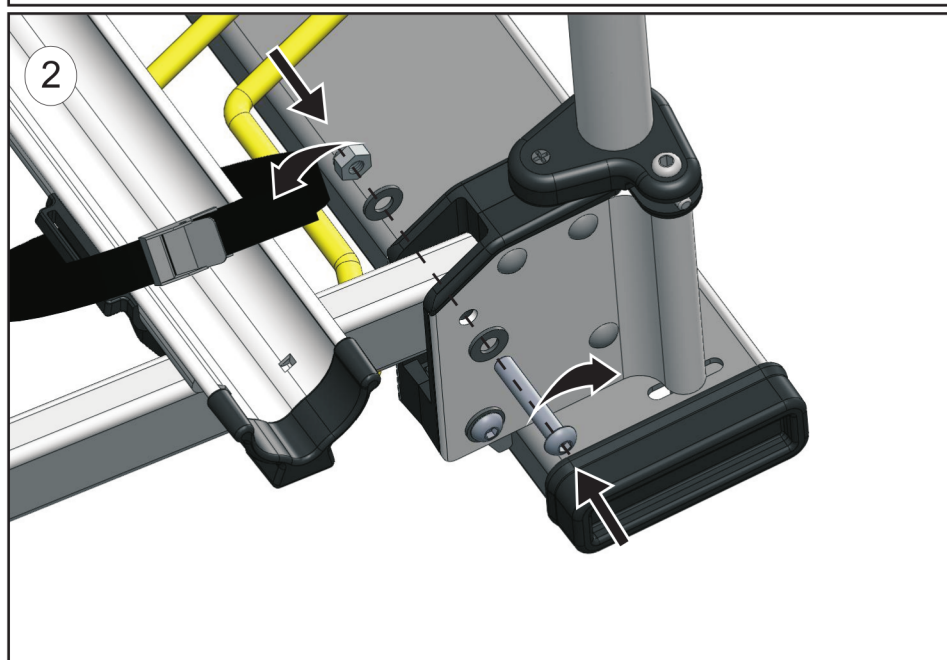
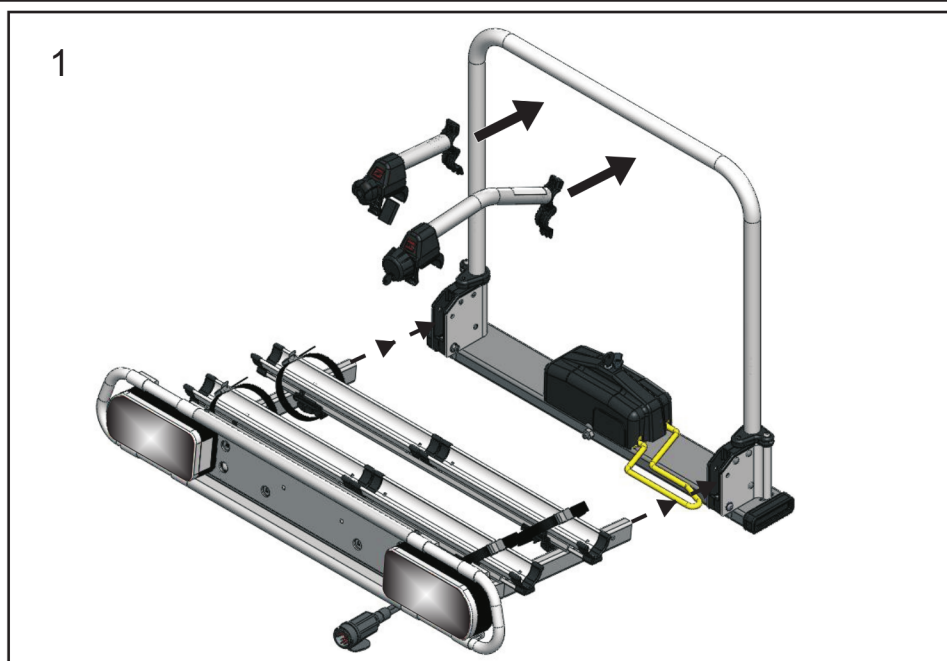
(I) Montaggio

(NL) Montage

(GB) Mounting

(F) Montage

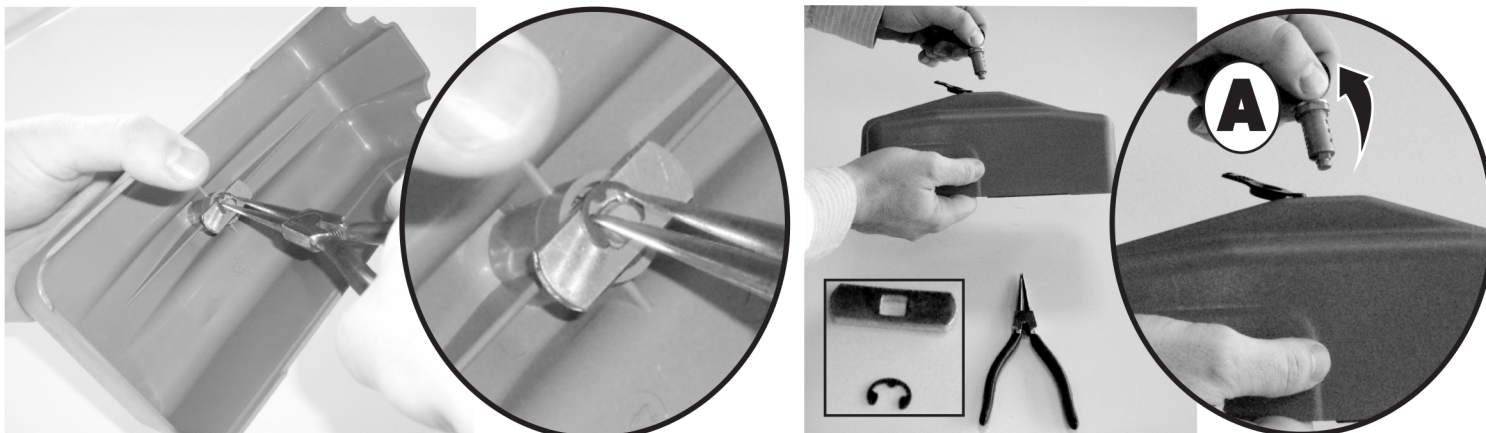
(CZ) Sestavení



- Ⓘ All'interno della scatola troverete un cilindretto serratura (A) da sostituire a quello (B) già montato = una sola chiave !
- Ⓕ La boîte contient un cylindre-serrure (A), qui doit remplacer celui (B) déjà monté = une seule clef !
- ⒸZ **Zámek (B) je připraven na výměnu s tím v boxu (A) = systém na jeden klíč.**
- Ⓓ Die Schachtel beinhaltet einen Schliesszylinder (A), der den montierten Zylinder (B) ersetzen soll = Grundträger gleichschliessend mit abschliessbarer Knebelschraube
- ⒼB The lock (B) already set is to be replaced with the one (A) hold in the box = One-key system !
- ⒶNL De inhoud van de daas in enn sluitcylinder (A) die cylinder (B) vervangt = alleen een sleutel !



Ⓓ Demontage	Ⓘ Smontaggio	ⒶNL Demontage
ⒼB Dismounting	Ⓕ Démontage	ⒸZ Rozebrání



Ⓓ Montage	Ⓘ Montaggio	ⒶNL Montage
ⒼB Mounting	Ⓕ Montage	ⒸZ Sestavení

